

HabaCHAIN® Slat and Conveyor Chains

Product Overview

Habasit – Solutions in motion



The HabaCHAIN® product program

Designed, produced, and serviced by the worldwide leader in belting, – Habasit. The HabaCHAIN® range offers top-level innovation and quality combined with excellent reliability and cost-efficiency.

HabaCHAIN® products are available in both straight-running and radius/side-flexing versions.

HabaCHAIN® runs on most systems and sprockets on the market today, and is fully compatible with the industry standards enabling retrofits.

HabaCHAIN® is available with a variety of state-of-the-art features including: special materials for low friction, self-lubrication, chemical resistance, as well as anti-static, flame retardant, magnetic, and high temperature properties.

Industries served

- Beverage • Canning • Bakery • Snack foods
- Meat - poultry - fish • Packaging • Dairy
- Electronics • Pharmaceuticals • Automotive
- Materials handling • Cardboard • Tissue • Textiles

Your solutions partner

Habasit is committed to understanding your design parameters and application needs. After reviewing your requirements, our specialists will suggest the best solution for each application.

Global expertise

With over 60 years of experience, the widest and most innovative product range, and an extensive global network, Habasit is the undisputed No. 1 in belting worldwide. We are dedicated to meeting your needs for innovative, high-quality, and perfectly serviced chain solutions.



The HabaCHAIN® website provides in-depth information, measurements, technical drawings, and details of different materials, for every product.

HabaCHAIN Chains

back Product Data Sheets Sprockets and Idlers

Click on the pictures for detailed information about our plastic chains!

Not all products are **standard stock items** in each country, please check with your local [contact](#).

Slat Top Plastic Chains

Slat Top 770T (Radius) Slat Top 820 (Straight) Slat Top 821 (Straight) Slat Top 831 (S)

Slat Top 879B (Radius) Slat Top 879T (Radius) Slat Top 880B (Radius) Slat Top 880T (R)

Slat Top 880M (Radius) Slat Top 880J (Radius) Slat Top 882B (Radius) Slat Top 882T (R)

Slat Top 882TG (Radius) Slat Top 880T (Radius) Slat Top 1061M (Radius) Slat Top 1061T

Low Back Pressure Chains

Slat Top 879T (Radius)

back

Description

Slat Top 879T is a tabbed standard duty radius and straight running plastic chain. Top plate thickness 4.8 mm. Applications include general conveyance, packaging and empty container handling. Use 879T series for side transfer with 831 series straight chains.

Product Data Sheet

Slat Top 879T (Radius)

HabaCHAIN® Slat Top 879T (Radius)

Description

Slat Top 879T is a tabbed standard duty radius and straight running plastic chain. Top plate thickness 4.8 mm. Applications include general conveyance, packaging and empty container handling. Use 879T series for side transfer with 831 series straight chains.

Chain Data

Product code	Width	Height	Weight	Pitch	Weight	Weight	Weight	Weight	Weight	Weight	Weight	Weight	Weight	Weight	Weight	Weight	Weight	Weight	Weight	
CONTRAGOPHIA	82.0	5.25	1.22	51.0	0.11	1000	420	807	16.3	17										
CONTRAGOPHIA	82.0	5.25	1.22	51.0	0.11	1000	420	807	16.3	17										
CONTRAGOPHIA	116.3	4.50	1.30	50.0	0.07	1000	420	500	10.7	17										
CONTRAGOPHIA	116.3	4.50	1.30	50.0	0.07	1000	420	500	10.7	17										
CONTRAGOPHIA	146.5	7.00	1.96	150.0	0.05	1000	420	800	24.0	17										
CONTRAGOPHIA	146.5	7.00	1.96	150.0	0.05	1000	420	800	24.0	17										

Pin material: stainless steel

- Standard packaging: 3.048 m = 10 ft
- The weight specification is indicative
- Other materials on request

Related products

- Multi-Hub 880 Sprocket-Rims
- Multi-Hub Inserts
- Solid Sprockets - Series 880

Options

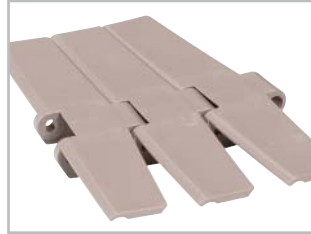
- Plastic pin

For further information and availability please contact your local Habasit partner.

Slat Top plastic chains



770T (radius)



879B (radius)



880T (radius)



890T (radius)



820 (straight)



879T (radius)



880M (radius)



1061M (radius)



821 (straight)



880B (radius)



882B (radius)



1061T (radius)



828 (straight)



880J (radius)



882T (radius)



831 (straight)



880LJ (radius)



882TG (radius)

Low back pressure chains LBP



821 (straight)



821SB (straight)



882T (radius)



882T SB (radius)

Slat Top steel chains



800 (straight)



810 (straight)



881B (radius)



881T (radius)

Flexi chains



7100 (radius)



7100F (radius)



7100G (radius)

Multiflex chains



1700 (radius)



1701T (radius)

Snap-on chains



843 (straight)



963T (straight)



1873+L4 (radius)



843C (straight)



1843T (radius)



1874T (radius)



863 (straight)



1873T+T (straight)



2873SD (radius)



863T (straight)



1873T (radius)



3873T (radius)



963 (straight)



1873+D1 (radius)

Case chains



40P (straight)



611T (radius)



1151T (radius)



1400 (radius)



60P (straight)



611TE (radius)



1200 (straight)



1410T (radius)



600 (radius)



1100 (straight)



1210T (radius)



3200 (straight)



601 (radius)



1110T (radius)



1250 (straight)



3210T (radius)



610T (radius)



1150 (straight)



1251T (radius)



NH78 (straight)

Multi-Hub sprockets and idlers for:

Slat Top plastic chains



Multi-Hub idler 820

equivalent to 21, 23, or 25 teeth, suitable for 820, 828, 831, 879B, 880B, 880J, 880LJ, 880M, 1061M chains



Multi-Hub sprocket 880

with 10, or 12 teeth, suitable for 828, 879, 880, and 890 chains



Multi-Hub sprocket 820

with 21, 23, or 25 teeth, suitable for 820, and 831 chains



Multi-Hub sprocket 882

with 12 teeth, suitable for 882 chains



Multi-Hub sprocket 821

two 881 sprockets with 25 teeth set up side-by-side, suitable for 821 chains



Multi-Hub sprocket 1060

with 16, or 18 teeth, suitable for 770, and 1061 chains

Low back pressure chains



Multi-Hub sprocket 821

two 881 sprockets with 25 teeth set up side-by-side, suitable for 821LBP chains



Multi-Hub sprocket 882

with 12 teeth, suitable for 882 LBP chains

Slat Top steel chains



Multi-Hub idler 820

equivalent to 21, 23, or 25 teeth, suitable for 810, and 881B chains



Multi-Hub sprocket 881

with 25 teeth, suitable for 881 chains



Multi-Hub sprocket 820

with 21, 23, or 25 teeth, suitable for 810 chains



Multi-Hub sprocket 821

two 881 sprockets with 25 teeth set up side-by-side, suitable for 800 chains

Multi-Hub inserts for idler and drive application



for shafts:

● round (Ø)

mm	inch
25	1
30	1 3/16
35	1 1/4
40	1 7/16
	1 1/2

■ square (width/height)

mm	inch
40	1 1/2

Retainer rings



for shafts:

● round (Ø)

mm	inch
20	1
25	1 3/16
30	
40	

■ square (width/height)

mm	inch
25	1
40	1 1/2

Solid sprockets and idlers for:

Slat Top plastic chains



Solid idler 810
with 17, 19, 21, 23, 25, 27, or 31 equivalent number of teeth, suitable for 820, 828, 831, 879B, 880B, 880J, 880LJ, 880M, 1061M chains



Solid sprocket 880
with 9, 10, 11, 12, 13, 14, or 15 teeth, suitable for 828, 879, 880, and 890 chains



Solid sprocket 820
with 17, 19, 21, 23, 25, 27, or 31 teeth, suitable for 820, 831 chains



Solid sprocket 882
with 9, 10, 11, 12, 13, 14, or 15 teeth, suitable for 882 chains



Solid sprocket 821
with 19, 21, 23, 25, 27, 29, or 31 teeth, suitable for 821 chains



Split sprocket 1061
with 14, 15, 17, 19, or 20 teeth, suitable for 770, 1061 chains

Low back pressure chains



Solid sprocket 821
with 19, 21, 23, 25, 27, 29, or 31 teeth, suitable for 821 LBP chains



Solid sprocket 882
with 9, 10, 11, 12, 13, 14, or 15 teeth, suitable for 882 LBP chains

Slat Top steel chains



Solid idler 810
with 17, 19, 21, 23, 25, 27, or 31 equivalent number of teeth, suitable for 810, and 881B chains



Solid sprocket 821
with 19, 21, 23, 25, 27, 29, or 31 teeth, suitable for 800 chains



Solid sprocket 810
with 19, 21, 23, 25, 27, or 31 teeth, suitable for 810 chains



Solid sprocket 881
with 19, 21, 23, 25, 27, or 31 teeth, suitable for 881 chains



Solid sprocket 820
with 17, 19, 21, 23, 25, 27, or 31 teeth, suitable for 810 chains

Flexi chains



Solid idler 7100
with 12, or 16 equivalent number of teeth, suitable for 7100 chains



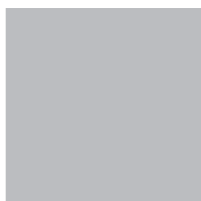
Solid sprocket 7100
with 12, or 16 teeth, suitable for 7100 chains

Solid sprockets and idlers for:

Snap-on chains



These use standard ANSI 40-1 roller chain sprockets from any supplier for 1/2 " base chains (08A-1), suitable for 843, and 1843 series chains



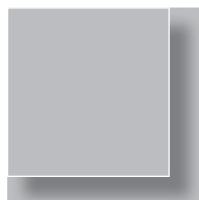
These use standard ANSI 60-1 roller chain sprockets from any supplier for 3/4 " base chains (12A-1), suitable for 863, 963, 1873, 1874, 2873, and 3873 series chains

Multiflex chains



Solid sprocket 1700 with 8, 10, 12, 13 teeth, suitable for 1700 chains

Case chains



These use standard ANSI 40-1 or ANSI 60-1 roller chain sprockets from any supplier, suitable for 40P or 60P chains



Solid sprocket 1150 with 7, 9, 10, 12, 14, 15, 16, or 17, teeth, suitable for 1150 chains



Solid sprocket 1400 with 6, 8, or 10 teeth, suitable for 1400 chains



Solid sprocket 600 with 6, 8, 10, 12, or 14 teeth, suitable for 600 chains



Solid sprocket 1200 with 8, 12, 15, or 17 teeth, suitable for 1200, and 3200 chains



Solid sprocket 3200 with 8, 10, 12, 15, 17, or 19 teeth, suitable for 1200, and 3200 chains



Solid sprocket 1100 with 7, 9, 10, 11, 12, 14, 15, 16, 17, or 19 teeth, suitable for 1100 chains



Solid sprocket 1250 with 8, 12, 15, or 17 teeth, suitable for 1250 chains



Solid sprocket NH78 with 6, 8, or 10 teeth, suitable for NH78 chains

Plastic chains (Standard chain materials)		
Code	Material Description	Color
DP	Standard POM (Acetal)	Gray
LF	Low-friction POM (Acetal)	Light brown
PT	Extra low-friction POM (Acetal)	Gray brown Flexi chains: White

Plastic chains (Special chain materials)		
Code	Material Description	Color
TS	Extra low-friction POM (Acetal)	Silver
EC	POM (Acetal) electrical conductive	Black
PK	POM (Acetal) aramidic fiber reinforced	Dark gray
WK	PA (Polyamide) aramidic fiber reinforced	Light green
HT	PA (Polyamide) heat resistant	Gray or black
NG	PBT (Polybutylene Terephthalate) lubricated	White
NP	PBT (Polybutylene Terephthalate)	White
PP	PP (Polypropylene) reinforced, chemical resistant	Natural white

Steel chains		
Code	Material Description	Color
CS	Carbon steel - 43 HRC	Black
SS	Ferritic stainless steel, AISI 430	Gray
SH	Martensitic stainless steel	Gray
SA	Austenitic stainless steel, AISI 304	Gray

Pins		
Code	Material Description	Color
SS	Ferritic stainless steel AISI 430	Gray
SA	Austenitic stainless steel AISI 304	Gray
IN	Austenitic stainless steel, AISI 316, chemical resistant	Gray
NG	PBT (Polybutylene Terephthalate) lubricated	White
PP	PP (Polypropylene) reinforced, chemical resistant	Natural white

Sprockets		
Code	Material Description	Color
CI	Cast iron	Gray
NY	PA (Polyamide)	Black
PE	PE (Polyethylene)	Natural white
ND	Special noise dampening material	Dark gray
LI	Multi-Hub PA (Polyamide)	Black

Austria

Habasit GmbH, Wien
Phone: +43 1 690 66
www.habasit.at

Belgium

Habasit Belgium N.V., Zaventem
Phone: +32 2 725 04 30
www.habasit.be

Canada

Habasit Canada Ltd., Oakville
Phone: +1 905 827 4131
www.habasit.ca

China

Habasit East Asia Ltd., Hong Kong
Phone: +852 2145 01 50
www.habasit.com.hk

Habasit (Shanghai) Co., Ltd.
Shanghai

Phone: +8621 5488 1228
Phone: +8621 5488 1218
www.habasit.com.hk

Czech Republic

Habasit Bohemia spol. s.r.o., Brno
Phone: +4205 41 421 651
www.habasit.cz

France

Habasit France S.A.S., Mulhouse
Phone: +33 389 33 89 03
www.habasit.fr

Germany

Habasit GmbH
Eppertshausen
Phone: +49 6071 969 0
www.habasit.de

Hungary

Habasit Hungária Kft., Esztergom
Phone: +36 33 510 610
www.habasit.hu

India

Habasit-lakoka Pvt. Ltd., Coimbatore
Phone: +91 422 262 78 79
www.habasitlakoka.com

Italy

Habasit Italiana SpA
Customer Care:
Phone: 199 199 333
For int. calls: +39 0438 911444
www.habasit.it

Japan

Habasit Nippon Co. Ltd., Yokohama
Phone: +81 45 476 03 71
www.habasit.co.jp

Netherlands

Habasit Netherlands BV, Nijkerk
Phone: +31 33 24 72 030
www.habasit.nl

New Zealand

Habasit Australasia Ltd., Hornby
Phone: +64 3348 5600
www.habasit.co.nz

Norway

Habasit Norge A/S, Oslo
Phone: +47 81 55 84 58
www.habasit.no

Poland

Habasit Polska Sp. zo.o.,
Dąbrowa Górnicza,
Phone: +48 32 639 02 40
www.habasit.pl

Romania

Habasit Import/Export Romania SRL,
Bucuresti, Phone: +40 21 323 95 65
www.habasit.ro

Russia

OOO Habasit Ltd., St. Petersburg
Phone: +7 812 325 40 82
www.habasit.ru

Singapore

Habasit Far East Pte. Ltd., Singapore
Phone: +65 6862 55 66
www.habasit.com.sg

Spain

Habasit Hispanica S.A.,
Barberà del Vallès
Phone: +34 93 719 19 12
www.habasit.es

Sweden

Habasit AB, Hindas
Phone: +46 301 226 00
www.habasit.se

Switzerland

Habasit GmbH, Reinach
Phone: +41 61 577 51 00
www.habasit.ch

Taiwan

Habasit Rossi (Taiwan) Ltd.
Taipei Hsien
Phone: +886 2 2267 0538
www.habasit.com.tw

Turkey

Habasit Kayis San. Ve Tic. Ltd. Sti.
Yenibosna - Bahçelievler - Istanbul
Phone: +90-212-654 94 04
www.habasit.com.tr

Ukraine

Habasit Ukraina, Vinnica
Phone: +38 0432 58 47 35
www.habasit.ua

United Kingdom and Ireland

Habasit Rossi (UK) Ltd., Silsden
Phone: +44 870 835 9555
www.habasitrossi.co.uk

USA

Habasit America
Conveyor belts, power
transmission belts, gearmotors
Suwanee, Georgia
Phone: +1 800-458-6431
www.habasitamerica.com

Habasit America
Seamless belts, timing belts
Middletown, Connecticut
Phone: +1 860 632 2211
www.seamlessbelts.com
www.habasync.com

Rossi is one of Europe's largest manufacturers of gear reducers, gearmotors, inverters, standard and brakemotors, and is a member of the Habasit Group.

Rossi S.p.A.
Via Emilia Ovest 915/A
41100 Modena – Italy
Phone: +39 059 33 02 88
www.rossi-group.com
info@rossi-group.com

Product liability, application considerations

If the proper selection and application of Habasit products are not recommended by an authorized Habasit sales specialist, the selection and application of Habasit products, including the related area of product safety, are the responsibility of the customer. All indications / information are recommendations and believed to be reliable, but no representations, guarantees, or warranties of any kind are made as to their accuracy or suitability for particular applications. The data provided herein are based on laboratory work with small-scale test equipment, running at standard conditions, and do not necessarily match product performance in industrial use. New knowledge and experiences can lead to modifications and changes within a short time without prior notice.

BECAUSE CONDITIONS OF USE ARE OUTSIDE OF HABASIT'S AND ITS AFFILIATED COMPANIES' CONTROL, WE CANNOT ASSUME ANY LIABILITY CONCERNING THE SUITABILITY AND PROCESS ABILITY OF THE PRODUCTS MENTIONED HEREIN. THIS ALSO APPLIES TO PROCESS RESULTS / OUTPUT / MANUFACTURING GOODS AS WELL AS TO POSSIBLE DEFECTS, DAMAGES, CONSEQUENTIAL DAMAGES, AND FURTHER-REACHING CONSEQUENCES.

Headquarters

Habasit AG
CH-4153 Reinach-Basel
Phone +41 61 715 15 15
Fax +41 61 715 15 55
E-mail info@habasit.com
www.habasit.com

Copyright Habasit AG
Subject to alterations
Printed in Switzerland
Publication data:
4122BRO.CHA-en1010HOR